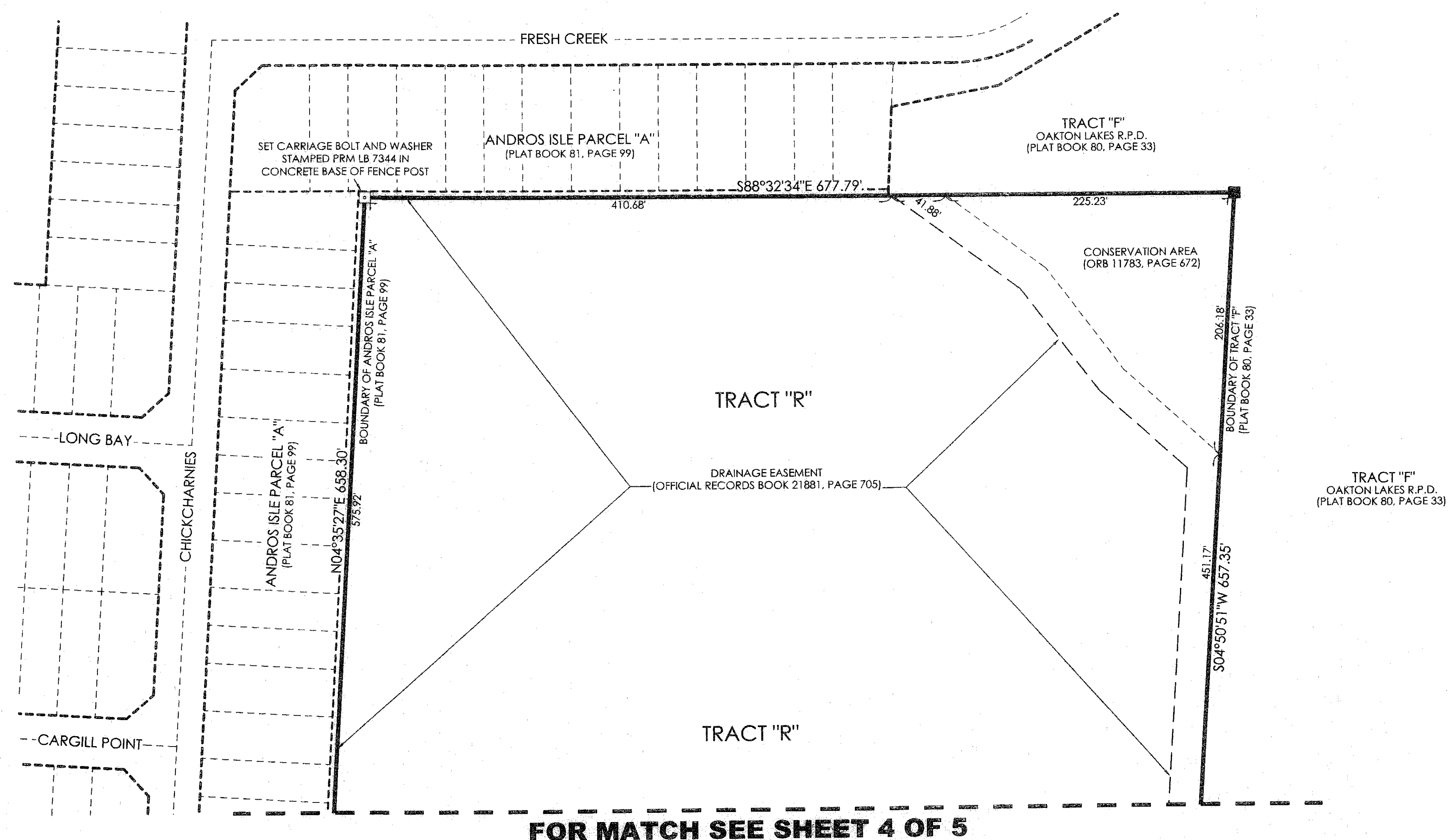
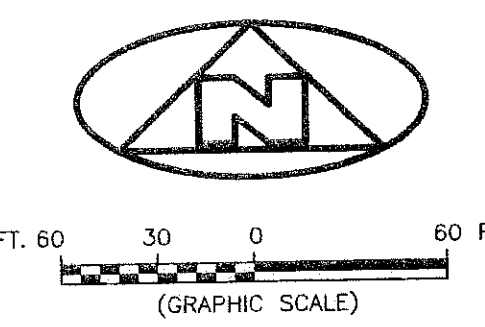


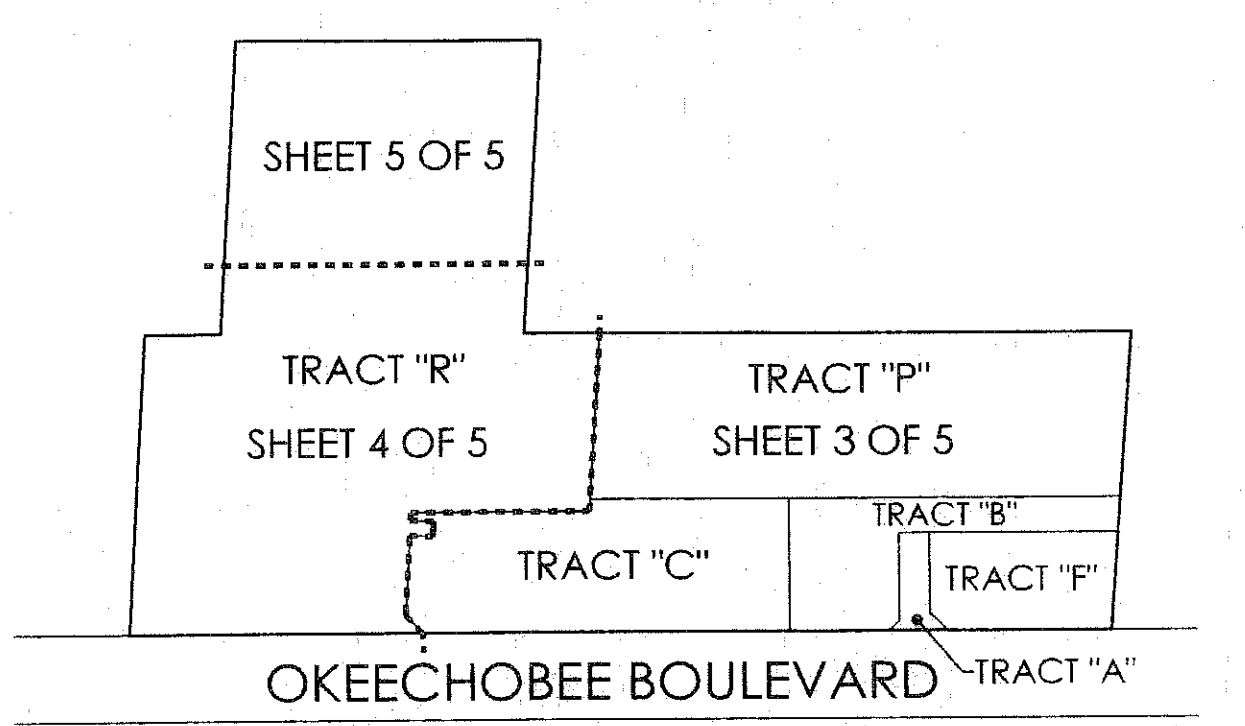
OAKTON COMMONS CPD

BEING A REPLAT OF TRACT "E", OAKTON LAKES R.P.D., RECORDED IN PLAT BOOK 80, PAGE 33, PUBLIC RECORDS, PALM BEACH COUNTY, FLORIDA, AND LYING IN THE SOUTHEAST ONE-QUARTER OF SECTION 20, TOWNSHIP 43 SOUTH, RANGE 42 EAST, CITY OF WEST PALM BEACH, PALM BEACH COUNTY, FLORIDA



FOR MATCH SEE SHEET 4 OF 5

SHEET INDEX

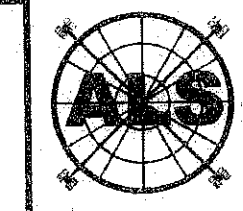


LEGEND

Table with 2 columns: Symbol and Description. Includes symbols for radial line, centerline, private drainage easement, utility easement, lift station easement, permanent reference monument, and official records book.

SURVEYOR'S NOTES

- 1. THE BEARING BASIS (BASE BEARING), AS SHOWN HEREON, IS BASED ON THE STATE PLANE GRID AZIMUTH BEARING OF NORTH 88°45'53" WEST, ALONG THE NORTH RIGHT-OF-WAY LINE OF OKEECHOBEE BOULEVARD, AS SHOWN HEREON, AND ALL OTHER BEARINGS ARE RELATIVE THERETO
2. IN THOSE INSTANCES WHERE UTILITY OR DRAINAGE STRUCTURES ARE CONSTRUCTED IN CONFLICT WITH THE PLATTED PERMANENT CONTROL POINT POSITION STRADDLERS MONUMENTED AS PERMANENT CONTROL POINTS WILL BE SET TO REFERENCE THE PLATTED POSITION.
3. LINES THAT INTERSECT CURVES ARE RADIAL UNLESS OTHERWISE NOTED.
4. THIS INSTRUMENT WAS PREPARED BY WM. R. VAN CAMPEN, PROFESSIONAL SURVEYOR AND MAPPER NO. 2424, IN AND FOR THE OFFICES OF ASSOCIATED LAND SURVEYORS, INC., 4152 WEST BLUE HERON BOULEVARD, SUITE 121, RIVIERA BEACH, FLORIDA, 33404



ASSOCIATED LAND SURVEYORS, INC.
4152 W. BLUE HERON BOULEVARD-SUITE 121
RIVIERA BEACH, FLORIDA 33404 LB 7344
PHONE: (561) 848-2102 FAX: (561) 844-9659 EMAIL: AILLSURVEY@AOL.COM

Table with 2 columns: Field and Value. Includes FILE: Oakton Commons Plat, FB: WO.NO.: P226, SCALE: 1"=60', DATE: 10-28-2007, DWN: KVC, SHEET 5 OF 5